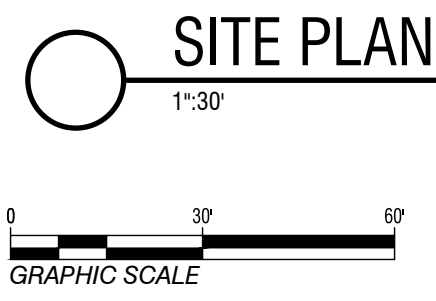
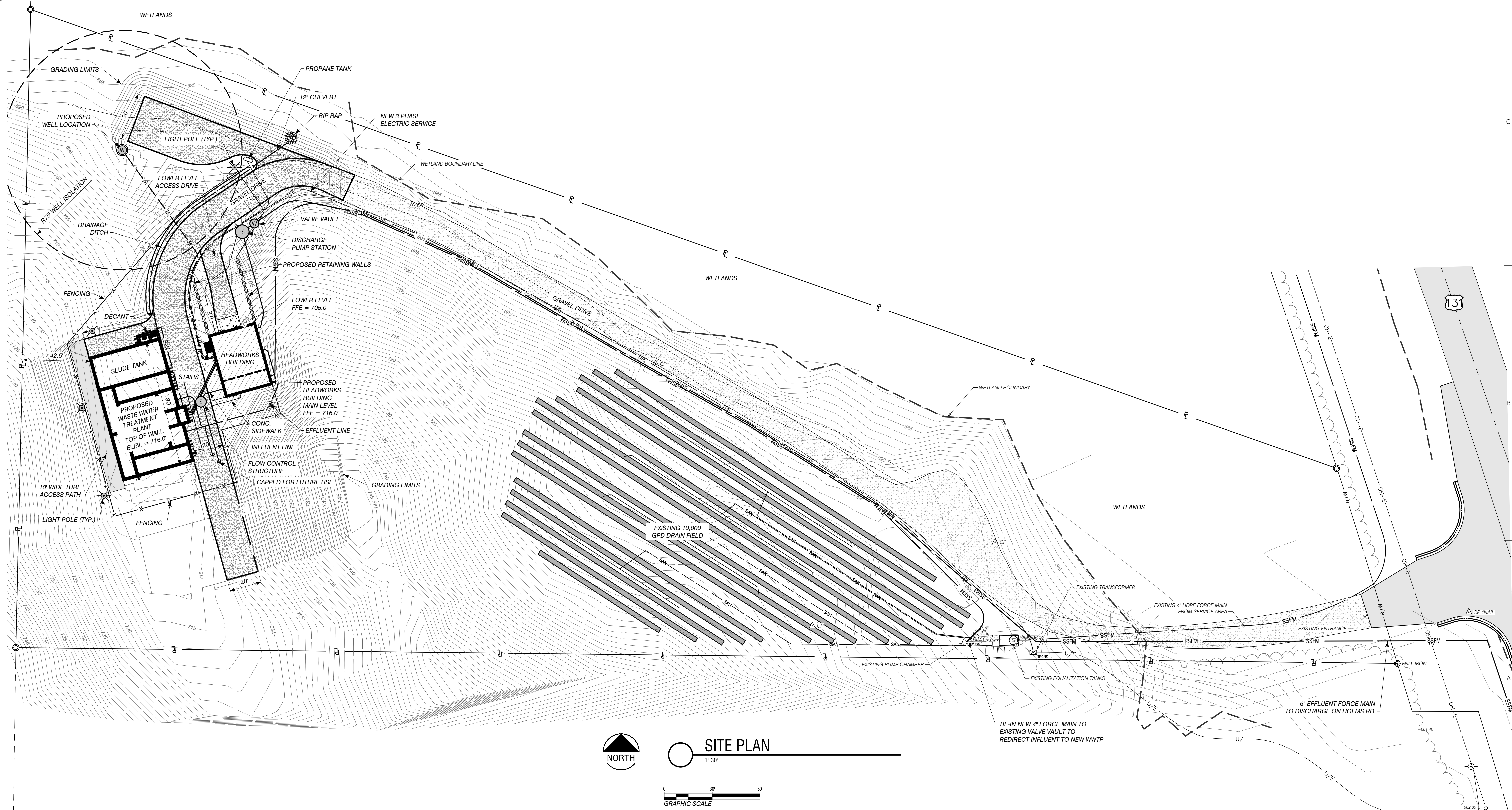


SITE INFORMATION

1. THE EXISTING DRAIN FIELD WILL REMAIN OPERATIONAL DURING THE PROPOSED CONSTRUCTION. CONTRACTOR SHALL COORDINATE WITH OPERATOR FOR ALL ACTIVITIES THAT MAY IMPACT ACCESS TO THE EXISTING FACILITY, EQUIPMENT, AND/OR UTILITY DISRUPTIONS.



SITE PLAN

CONSULTANTS
MELROSE TOWNSHIP
WASTEWATER TREATMENT PLANT

copyright - all rights reserved. These drawings remain the property of performance engineers, inc. and are for uses authorized by the architect only.

Performance Engineers, Inc.
Civil / Structural Engineering
406 Petoskey Avenue
Charlevoix, Michigan 49720
Phone: (231) 547-2121
Fax: (231) 547-0064
www.performanceeng.com

DATE	ISSUED FOR
2/27/26	PERMITS
.	.
.	.
.	.
.	.
.	.
.	.
.	.
.	.

SEAL

PIC:	AEN
PM:	CJR
DRAFTS:	CJR
PROJECT NO:	25-5027
SHEET TITLE	SITE PLAN
SHEET	C301
SHEET No.	4

C:\USERS\CARLJASCH\PERFORMANCE ENGINEERS\PROJECTS\6027\DRAWINGS\WWT\DRAWINGS\5027 SITE.DWG - C301 - PLOTTED 2/27/2026 9:02 AM BY CARL J. RASCH

DATE: _____ CHECKED BY: _____ DRAWN BY: _____ DATE: _____ CORRECTED BY: _____